



United Nations  
Educational, Scientific and  
Cultural Organization



UNESCO Chair on Water,  
Energy and Disaster Management  
for Sustainable Development,  
Kyoto University, Japan



# Kyoto University UNESCO Chair WENDI

Kaoru Takara

International Inaugural Symposium for UNESCO Chair on Water, Energy and  
Disaster Management for Sustainable Development

**Kyoto University**

**30 July 2018**

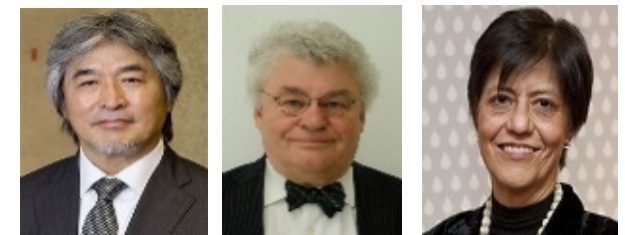
Supported by Kyoto University Zengaku Keihi  
with participation from UNESCO Chairs/Centres

2018/07/30

# History to WENDI



- Active participation in **UNESCO-IHP** since 1995
- MoU between KU-DPRI and UNESCO in 1999
- UNESCO-KU-ICL **UNITWIN Network in “Landslide Risk Mitigation”** since March 2003
- Renewed UNESCO-KU-ICL **UNITWIN Network in “Landslide and Water-Related Disaster Risk Management”** since November 2010
- MoU between KU and UNESCO for Internship since November 2012
- Special Lecture by Irina Bokova, UNESCO DG on 6 Nov. 2012
- **Proposal of WENDI** to UNESCO HQ in April 2017
- **Approval notification** in August 2017
- International Symposium on Utilization of Field Sites in Research and Education (**FREE2017**) on 8-9 December 2017
- **Signing Agreement between UNESCO and KU** and Kyoto University UNESCO Chair Special Seminar on 13 February 2018
- Official logo approved in March 2018
- Creating another logo of WENDI
- **Inaugural Symposium** on 30 July 2018



# Symposium Objectives

- This symposium seeks to promote dialogue, exchange and collaboration, including academic research and networking amongst UNESCO Chairs and Centres.
- It will also lay the groundwork for expanding and strengthening the academic network for collaboration and exchange in higher education and research between Kyoto University and partner universities/organisations.

# Speakers Invited from UNESCO and UNESCO Category 2 Centres (Incl. DID, Malaysia)

13:05-13:25	Dr. Peter Wells Chief, Higher Education, UNESCO Headquarters, France
13:25-13:45	Ir. Dr. Hj. Md. Nasir Md.Noh Director General, Department of Irrigation and Drainage, Malaysia
13:45-14:05	Dr. Norlida Mohd Dom Deputy Director, The Regional Humid Tropics Hydrology and Water Resources Centre for Southeast Asia and the Pacific (HTC), Malaysia
14:05-14:25	Prof. Maciej Zalewski Director, European Regional Centre for Ecohydrology of the Polish Academy of Sciences & Chairman, Department of Applied Ecology, Faculty of Biology and Environmental Protection, University of Lodz, Poland
14:25-14:45	Dr. Ignasius D.A. Sutapa Executive Director, Asia and Pacific Centre for Ecohydrology (APCE-UNESCO), Indonesia
14:45-15:05	Prof. Toshio Koike Director, International Centre for Water Hazard and Risk Management (ICHARM), Japan

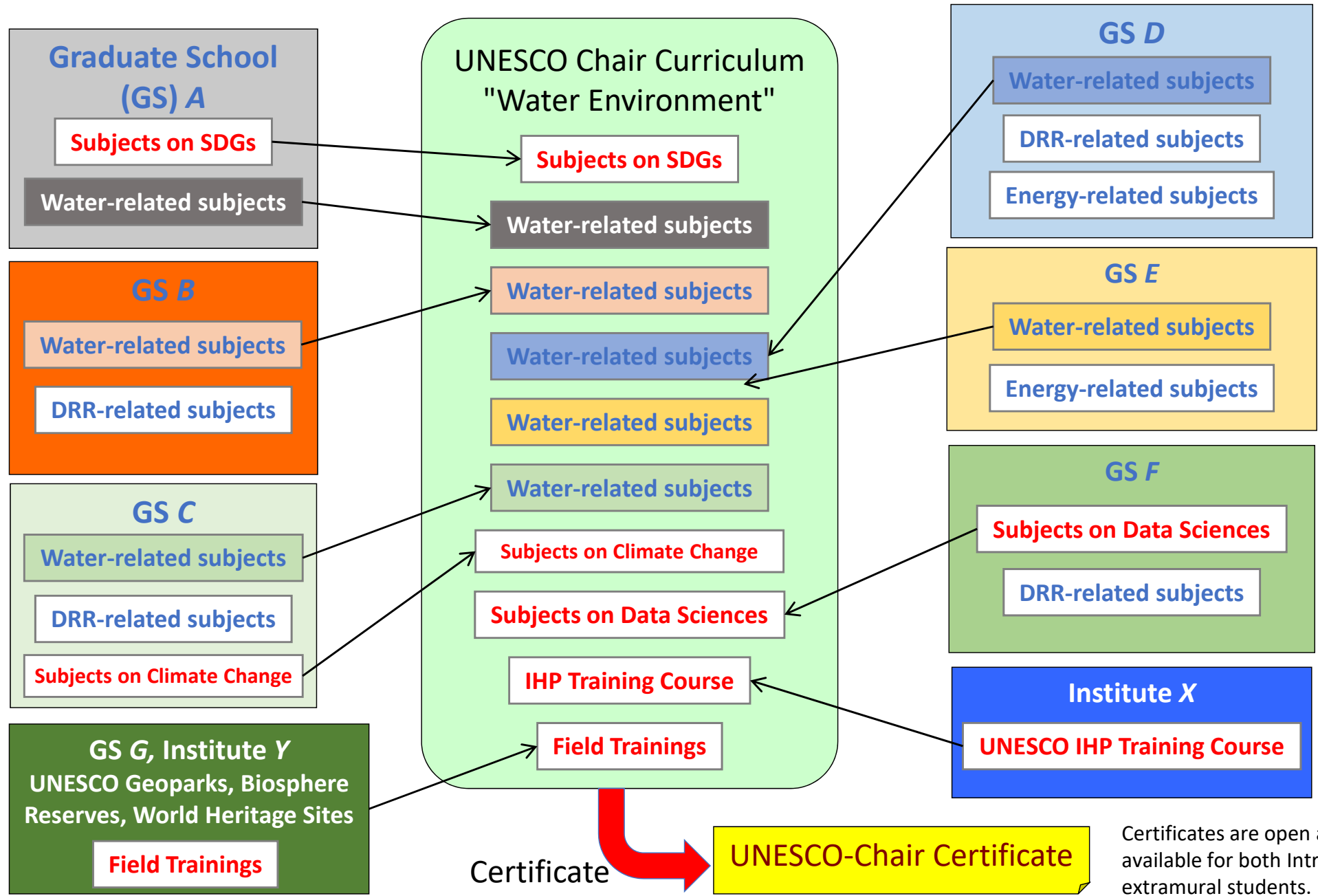
# Speakers Invited from UNESCO Chairs

15:40- 16:00	Prof. Matjas Mikos UNESCO Chair Holder, UNESCO Chair on Water-Related Disasters Risk Reduction, Slovenia
16:00- 16:20	Dr. iur. Barbara Janusz-Pawletta UNESCO Chair Holder, UNESCO Chair on Water Management in Central Asia, German-Kazakh University, Kazakhstan
16:20- 16:40	Dr. Sucharit Koontanakulvong UNESCO Chair Holder, UNESCO Chair on Water, Disaster Management and Climate Change, Chulalongkorn University, Thailand
16:40- 17:00	Prof. Takeyuki Okubo Director, Institute of Disaster Mitigation for Urban Cultural Heritage (UNESCO Chair on Cultural Heritage and Disaster Risk Management), Ritsumeikan University, Japan

# Characteristics of Kyoto University: Why UNESCO Chair on Water, Energy and Disaster Management?

- **Many** water-related professors in Graduate Schools of Science, Engineering, Agriculture, Management, and Global Environmental Studies, etc.
- **Only one:** Graduate School of Energy Science.
- **Unique:** Research Institutes such as Disaster Prevention Research Institute (DPRI), Institute of Advanced Energy (IAE) and Research Institute for Sustainable Humanosphere (RISH) in Uji Campus.
- **Area studies:** Graduate School of Asian and African Area Studies (ASAFAS), Center for Southeast Asian Studies (CSEAS).
- **New:** Graduate School of Advanced Integrated Studies in Human Survivability (GSAIS = Shishukan).

**Expected structure of systematic and interdisciplinary curricula under the Chair  
(In case of the water environment course, as an example)**



Certificates are open and available for both Intra- and extramural students.

# Off-Campus Facilities for Education and Research in Kyoto University (Kyodai Weeks 2017)

★は京大ウィークス2017参加施設

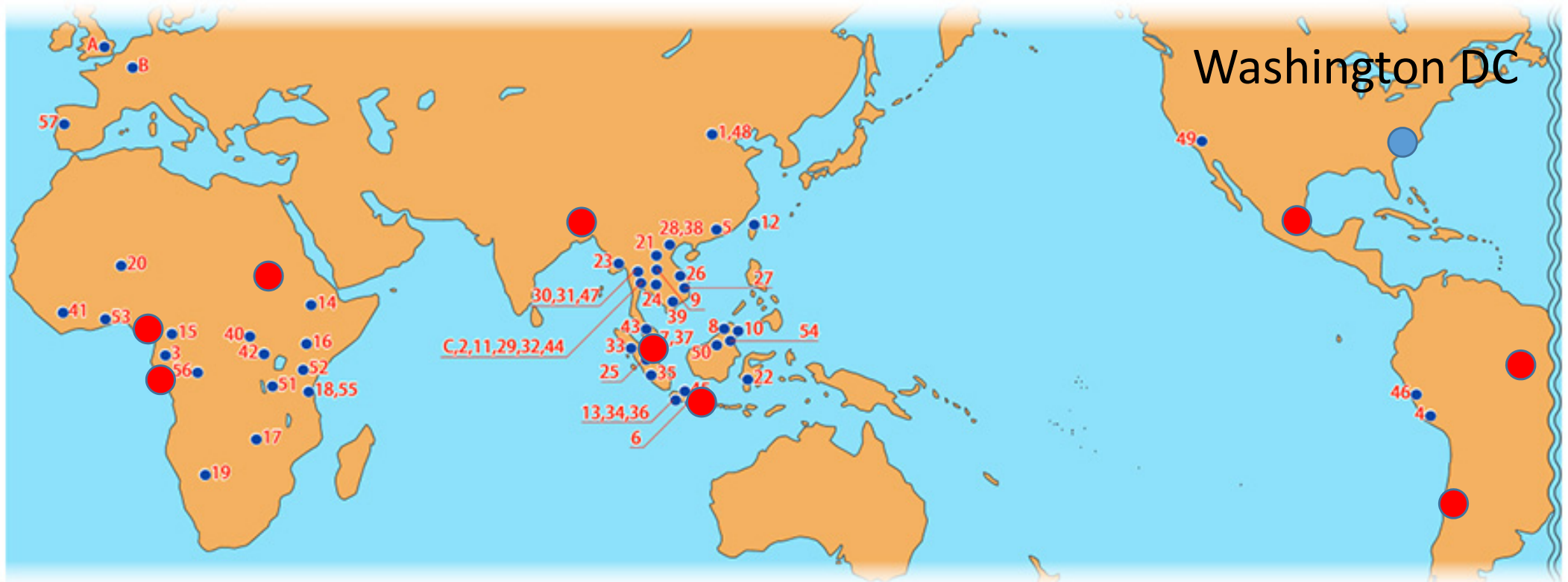
- 1 舞鶴水産実験所(フ)
- 2 牧場(農)
- 3 芦生研究林(フ)★P12
- 4 上賀茂試験地(フ)★P13
- 5 花山天文台(理)★P10-11
- 6 流域災害研究センター宇治川オープンラボラトリー(防)★P15
- 7 栽培植物起原学研究室分室(農)
- 8 宇治キャンパス★P14
- 9 農場(農)★P16-17
- 10 生態学研究センター★P09
- 11 流域圏総合環境質研究センター(工)★P08
- 12 信楽MU観測所(生)★P07
- 13 地震予知研究センター達坂山観測所(防)
- 14 地震予知研究センター阿武山観測所(防)★P20
- 15 原子炉実験所★P18-19
- 16 地震予知研究センター屯鶴峯観測所(防)
- 17 大宇陀観測所(理)
- 18 紀伊大島実験所(フ)
- 19 流域災害研究センター潮岬風力実験所(防)★P23
- 20 瀬戸臨海実験所(フ)★P22
- 21 流域災害研究センター白浜海象観測所(防)
- 22 和歌山研究林(フ)★P21

- 1 北海道研究林[標茶区](フ)★P02
- 2 北海道研究林[白糠区](フ)★P02
- 3 流域災害研究センター大湊波浪観測所(防)
- 4 木曾生物学研究所(理)
- 5 地震予知研究センター上宝観測所(防)★P04
- 6 流域災害研究センター穂高砂防観測所(防)★P05
- 7 飛騨天文台(理)★P03
- 8 地震予知研究センター北陸観測所(防)
- 9 霊長類研究所★P06
- 10 地震予知研究センター鳥取観測所(防)
- 11 徳山試験地(フ)★P24
- 12 地震予知研究センター徳島観測所(防)
- 13 斜面災害研究センター徳島地すべり観測所(防)★P25
- 14 地球熱学研究施設(理)★P26-27
- 15 地球熱学研究施設火山研究センター(理)★P28
- 16 熊本サンクチュアリ(野)
- 17 地震予知研究センター宮崎観測所(防)★P30
- 18 幸島観察所(野)★P29
- 19 火山活動研究センター桜島火山観測所(防)★P31
- 20 生活・森林圏シミュレーションフィールド(生)
- 21 屋久島観察所(野)

(理)…理学研究科 (工)…工学研究科 (農)…農学研究科 (生)…生存圏研究所  
 (防)…防災研究所 (フ)…フィールド科学教育研究センター (野)…野生動物研究センター



# 57 overseas sites + 9 SATREPS Sites

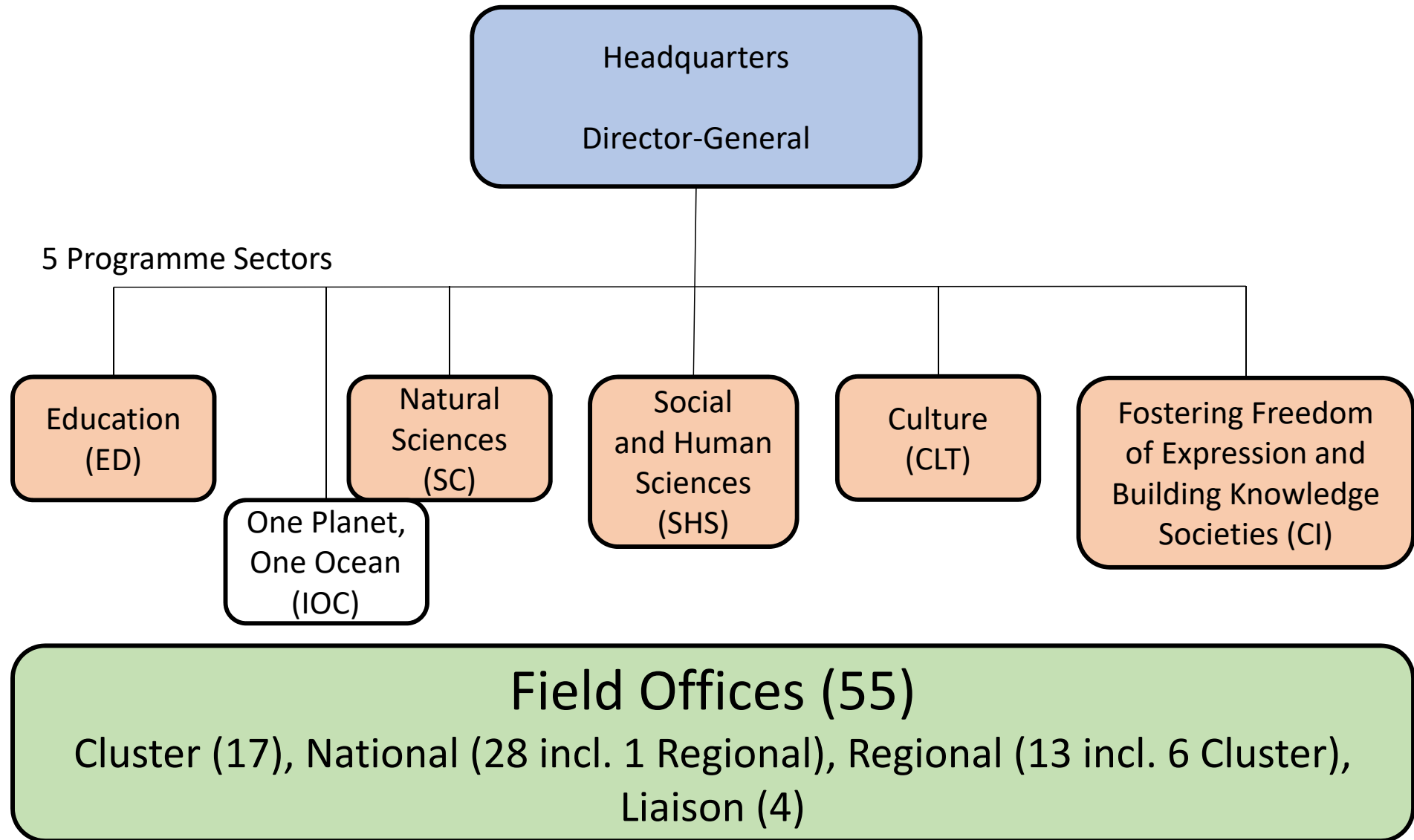


<http://www.kyoto-u.ac.jp/ja/about/campus/facilities/foreign.html>

- SATREPS Projects lead by Kyoto University Researchers (13)  
Cameroun 2 (2010-2015、2017-), Gabon (2008-2013), Ethiopia (2018-)  
Bangladesh (2013-), Malaysia (2010-2015), Indonesia 4 (2011- , 2013- , 2014- , 2015- )  
Mexico (2015- ), Chile (2017- ), Brazil (2013- )

※SATREPS: Science and Technology Research Partnership for Sustainable Development

# UNESCO Programme Sectors and Field offices



World Cultural Heritages (CLT), World Natural Heritages, Geoparks (SC-IGGP), Biosphere Reserves (SC-MAB)

# World Natural Heritages in Japan

Yakushima is used as a field site by the Primate Research Institute, Kyoto University.

## SHIRETOKO

(HOKKAIDO)

Area: Approx. 71,100ha Inscription: 2005

Shiretoko World Heritage Conservation Center  
186-10 Utoro-nishi, Shari-cho, Shari-gun, Hokkaido

## SHIRAKAMI-SANCHI

(AOMORI, AKITA)

Area: Approx. 17,000ha Inscription: 1993

Shirakami-Sanchi World Heritage Conservation Center

· Nishimeya-kan

(Nishimeya Ranger Office for Nature)

61-1 Aza Kanda, Oaza Tashiro,  
Nishimeya-mura, Nakatsugaru-gun, Aomori

· Fujisato-kan

(Fujisato Ranger Office for Nature)

63 Aza Satokuri, Fujikoto, Fujisato-cho,  
Yamamoto-gun, Akita

## OGASAWARA ISLANDS

(TOKYO)

Area: Approx. 7,900ha  
Inscription: 2011

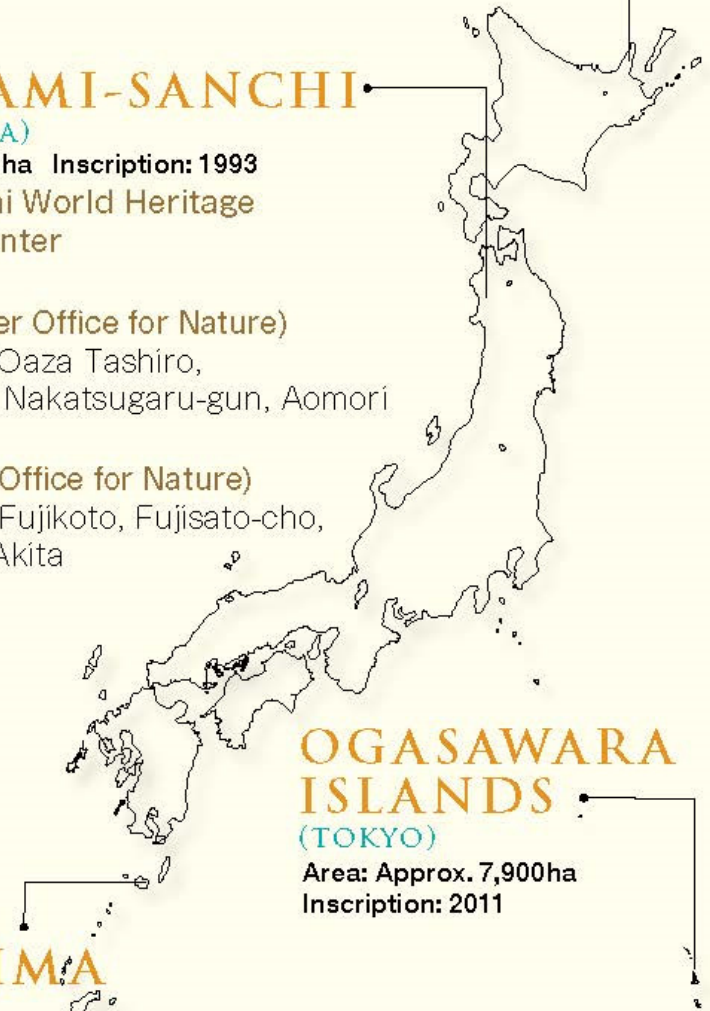
## YAKUSHIMA

(KAGOSHIMA)

Area: Approx. 10,700ha Inscription: 1993

Yakushima World Heritage Conservation Center

2739-343 Anbomaedake, Yakushimas-cho,  
Kumage-gun, Kagoshima



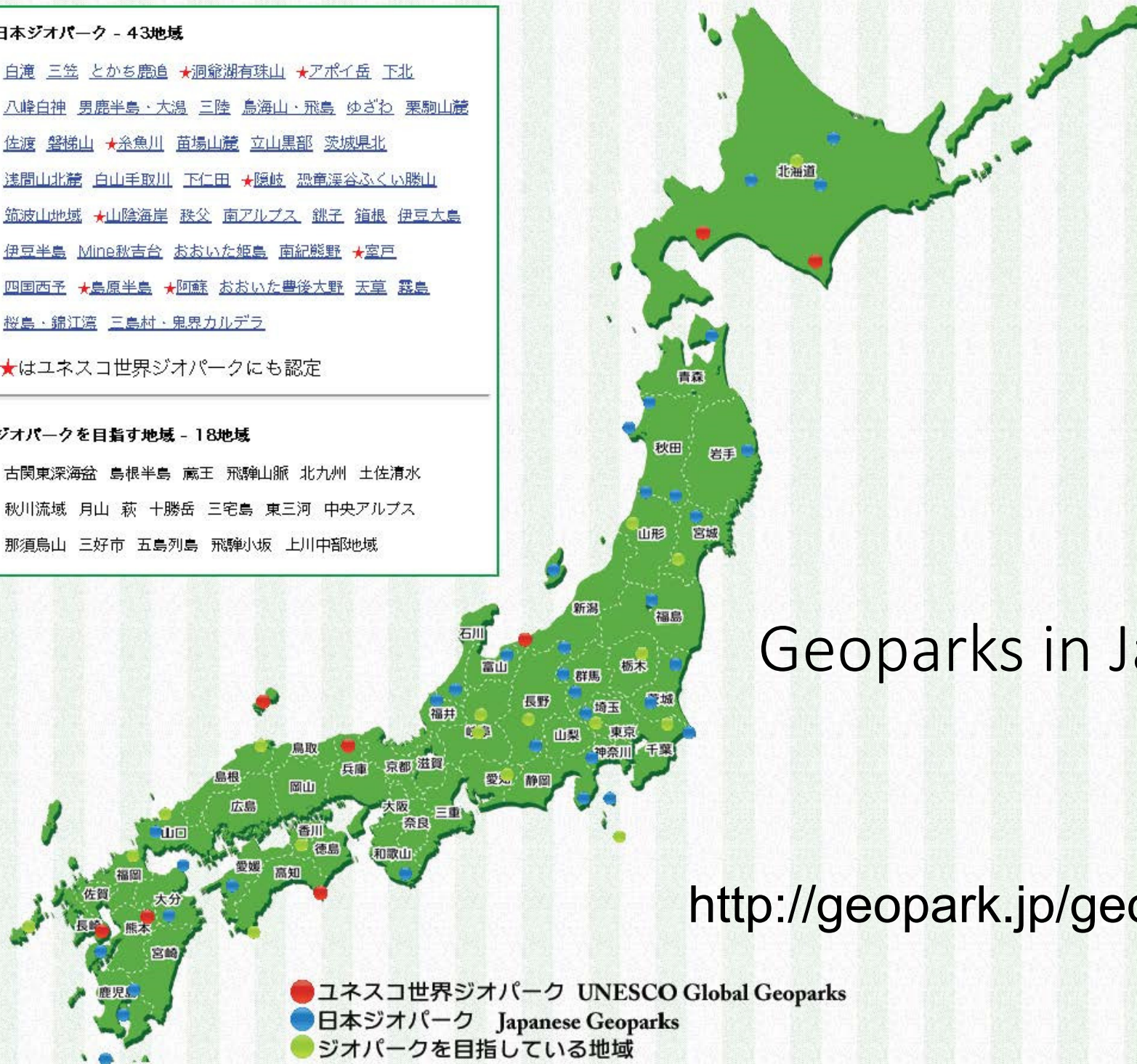
### 日本ジオパーク - 43地域

白滝 三笠 とかち鹿島 ★洞爺湖有珠山 ★アポイ岳 下北  
八峰白神 男鹿半島・大湯 三陸 鳥海山・飛鳥 ゆざね 粟駒山麓  
佐渡 磐梯山 ★糸魚川 苗場山麓 立山黒部 茨城県北  
浅間山北麓 白山手取川 下仁田 ★隠岐 恐竜渓谷ふくいの勝山  
筑波山地域 ★山陰海岸 秩父 南アルプス 継子 箱根 伊豆大島  
伊豆半島 Mine秋吉台 おおいた姫島 南紀熊野 ★室戸  
四国西予 ★島原半島 ★阿蘇 おおいた豊後大野 天草 霧島  
桜島・錦江湾 三島村・鬼界カルデラ

★はユネスコ世界ジオパークにも認定

### ジオパークを目指す地域 - 18地域

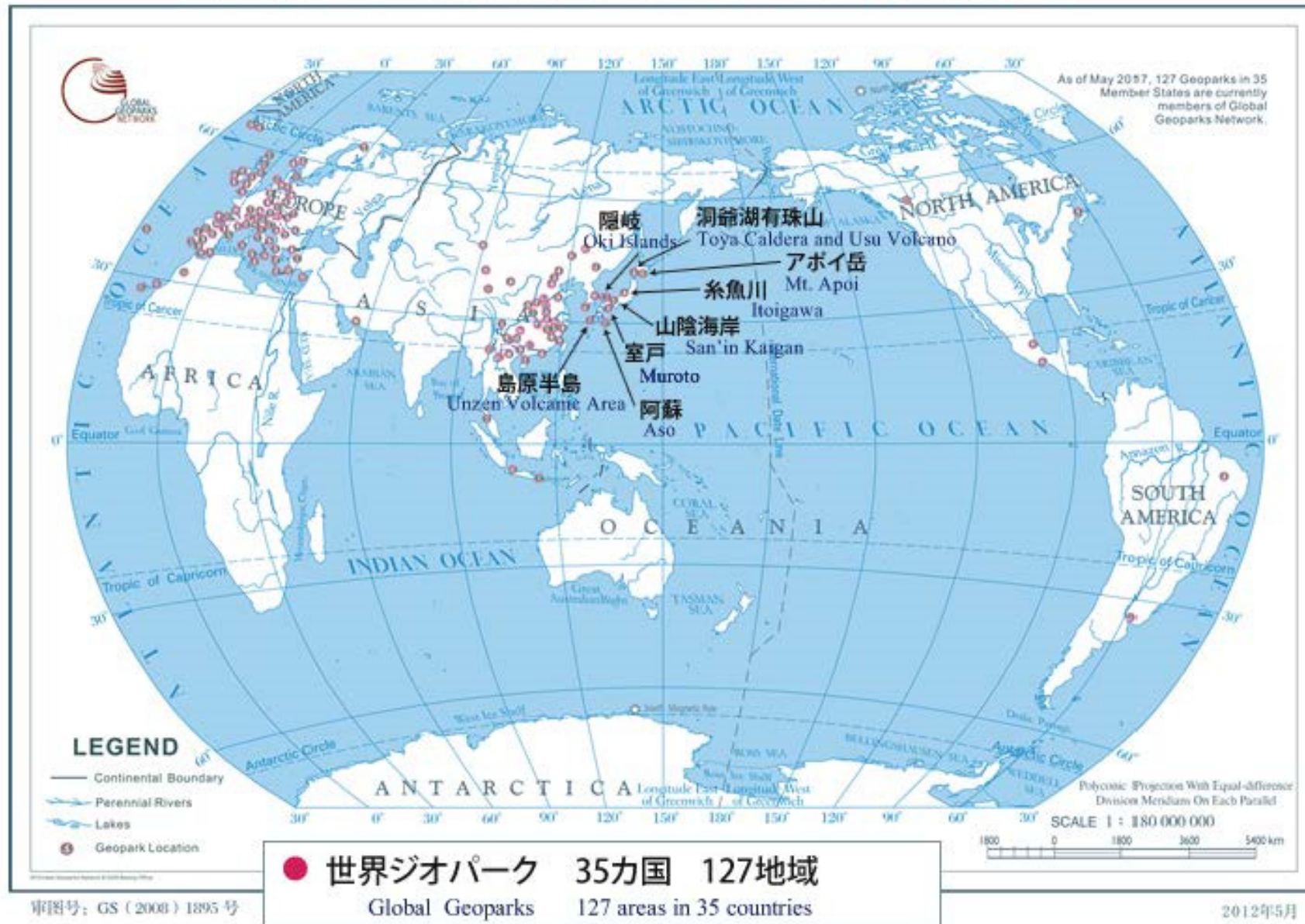
古関東深海盆 島根半島 蔵王 飛騨山脈 北九州 土佐清水  
秋川流域 月山 萩 十勝岳 三宅島 東三河 中央アルプス  
那須烏山 三好市 五島列島 飛騨小坂 上川中部地域



Geoparks in Japan

<http://geopark.jp/geopark/>

# Distribution of GGN Members

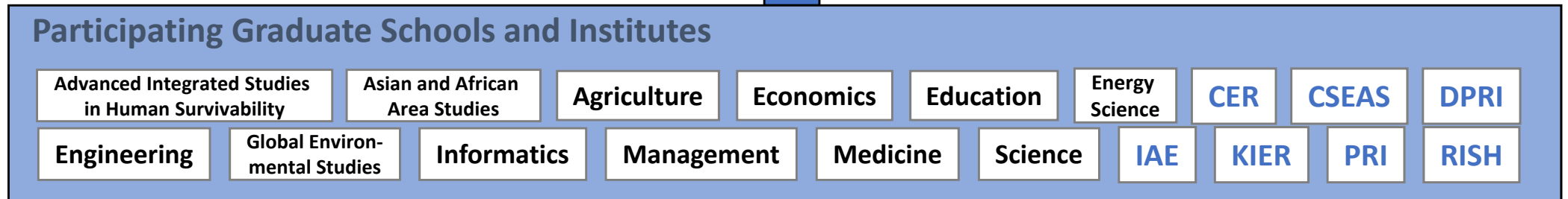
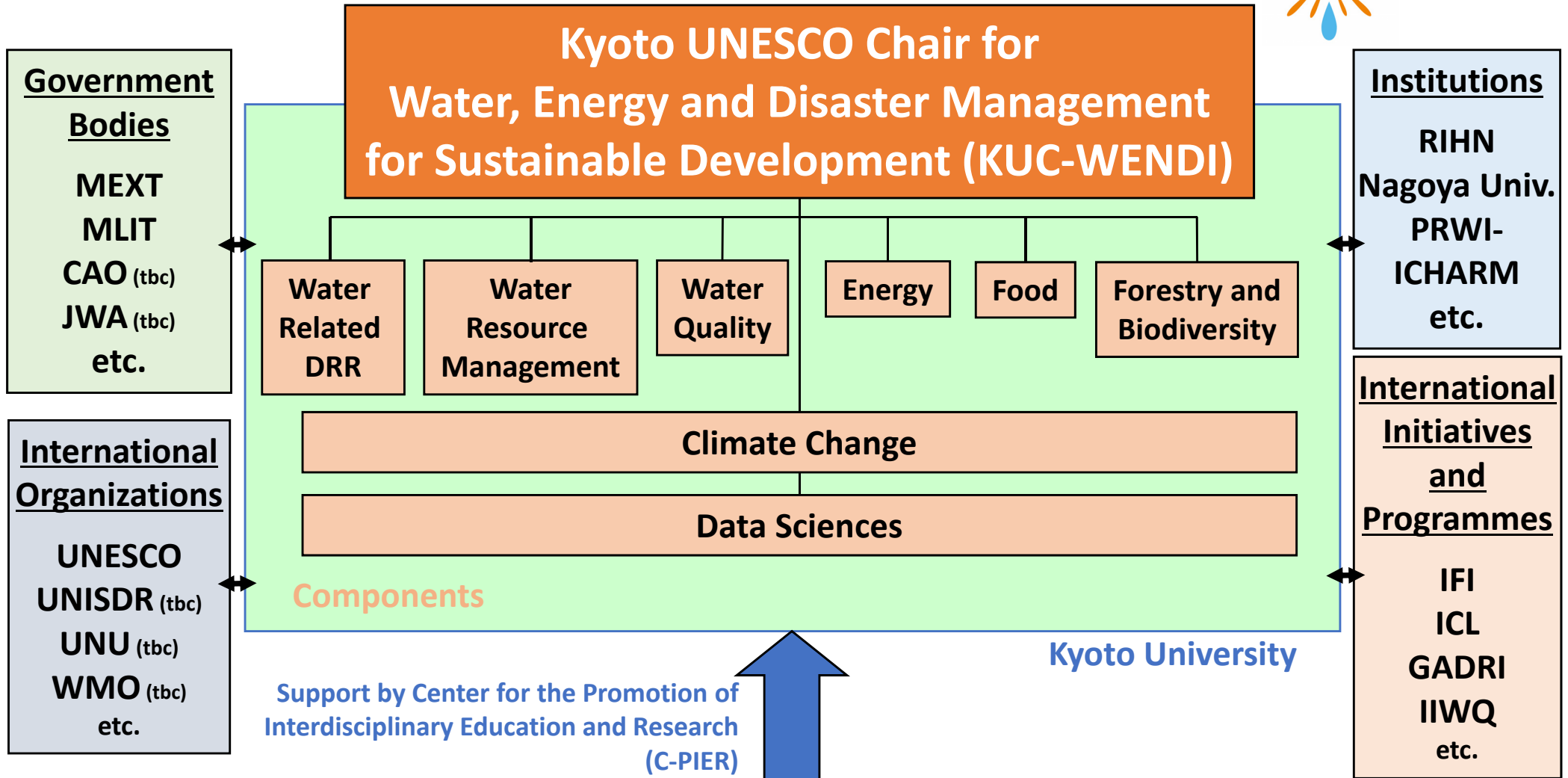


引用：Global Geoparks Network

[Distribution of GGN Members Global Network of National Geoparks](http://www.geopark.jp/about/ggn_jgn.html) (2017年5月時点)

[http://www.geopark.jp/about/ggn\\_jgn.html](http://www.geopark.jp/about/ggn_jgn.html)

# Implementation Structure and Partners



# Kyoto UNESCO Chair on Water, Energy and Disaster Management for Sustainable Development (KUC-WENDI)

Overall objectives To promote multi-disciplinary and holistic approach for research implementation, knowledge transfer and capacity building in the fields of water, energy, and disaster management and linkages to other sectors (food, forestry, biodiversity, climate change and data science) by establishing a comprehensive and trans-disciplinary programmes on the Education for Sustainable Development (ESD) in graduate school-level and implementing international collaborative researches utilizing existing UNESCO-Sites such as Geoparks, Biosphere Reserves and Cultural, Natural and Mixed World Heritage Sites.

## Goal / Rationale / Impact



**UNESCO Chair  
- KU-Model of ESD-**

**Autonomous and Systematic**  
study in graduate school level

- Establishment of "KU-Model of ESD", through implementing Graduate-school-level ESD as the first in Japan
- Expanding international collaborative researches utilizing UNESCO-Sites as the application field.

Acknowledging the challenges

Sharing of the implementations around the world

Seeking for measures towards solutions

Supporting the human resource development with a view of tackling various issues in the current society.

Field trainings / Internships

### UNESCO Sites

Geoparks (Global:119 / Japanese:43)

Biosphere Reserves (669 sites)

World Heritage Sites (Cultural:814,  
Natural:203, Mixed:35)

### KU's Network

in and out of Japan

European Center at Heidelberg

North American Center at

Washington D.C.

ASEAN Center at Bangkok

### Common Global Issues

Tackling  
**global risks and  
challenges**

by focusing on

**Water**

**Energy**

**Disaster**

and linkages to other sectors  
(food, forestry, biodiversity,  
climate change and data science)